



# 2016-17 Annual Report

Empowering  
students to discover  
their innate ability to  
succeed - since 2005

# Table of contents



Message from the Director .....	3
Elementary Programs .....	4
Middle School Program.....	6
2016-17 Program Highlights.....	8
Enrichment Clubs .....	9
Prevention and Life Skills.....	10
Family Outreach and Events.....	11
Thank you to our Supporters.....	12
Community Partners.....	13
Financial Information.....	14
Professional Development .....	15
2016-17 Staff .....	16

# From the Director

Since 2005, BEACON Afterschool has grown into a high quality, affordable afterschool option for families with an intentional blend of academic support and enrichment activities. Research has proven that high quality afterschool programs help children thrive. For years now, we have consistently served between 650 and 700 children every year, successfully improving grades, school attendance, and behavior, while exposing students to valuable life skills. BEACON gives children a safe place to explore new interests, meet new friends, develop new skills, and feel like a valued member of the community. BEACON has become a treasure for our small, rural community -- a program we can all be proud of.

Many, many thanks to our creative and committed staff, our community and State partners, our families, principals and school administrators, donors, and friends who support our mission and efforts. We couldn't do this work without you. Together we look forward to another year of empowering the youth of Grand County to succeed!



Warm wishes,  
Edith Sage  
BEACON Director



*“I love the BEACON program, I don't think students would be as successful without the program in place.”*

- HMK Teacher

## Elementary Program

*HMK Elementary and Moab Charter School*

## K-6 Grades: BIG IMPACT



- 488 total K-6 students were enrolled in BEACON (364 at HMK, 84 at MCS)
- 148 students received academic support
- 411 students participated in enrichment activities
- 272 students participated for 30 days or more
- 58% of our students were from marginalized families (65% at HMK, 49% at MCS)
- The average daily attendance for elementary grades was 136
- 11% of students were English Language Learners (ELL) and 26% minority students
- School attendance increased for 33% of students participating for 30 days or more (47% at HMK and 19% at MCS)
- Of BEACON students who attended the program 30+ days, who were at risk for failure, 40% increased grades in Language Arts. 42% of these students increased grades in Math.



**The Utah Education Policy Center recognized this BEACON site as one of top five most innovative afterschool programs in Utah!**

*“BEACON is such an important part of our school community at the middle school. Having the academic and social support for our students is critical in this time of their lives.”*

- GCMS Principal

-

# Middle School Program

*Grand County Middle School*



## 7-8 Grades: Making a Difference

- 151 students participated in enrichment clubs, and 174 in academic support
- 45 students attended 30 days or more
- Average daily attendance was 26
- 14% of BEACON students were enrolled in special education; 20% were minority students
- 51% of students came from economically disadvantaged families based on those qualifying for free or reduced lunch
- Career exploration: Field trips to Moab Regional Hospital; Community Rebuilds; Miguel's Baja Grill; Moab Veterinary Clinic; Moab Made; Moab Times Independent; Moab T-shirt Shop; Museum of Moab.

# 2016-17 Highlights

## Girls on the Run



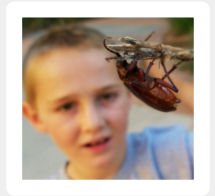
Girls on the Run had record breaking participation this year: 52 girls (4-8th grades) from all three program sites.

## Planting Trees



HMK students planted native cottonwood trees on the Colorado River with UT Dept. of Natural Resources.

## Summer Camp



We piloted our first summer program in partnership with Moab City Recreation with 24 campers attending each week.

## Growth in STEM



As part of USU's STEM Industry Council, BEACON continues to develop STEM learning opportunities K-8 students .that help prepare students for further STEM education in high school.

## Strings Program



The Moab Strings Program continues to thrive with more than 50 students enrolled in all three program sites!

## K-9 Service



Moab Charter School established a community service-based club, K-9 Club in partnership with the Moab Animal Shelter.



# Enrichment Clubs



	HMK	MCS	GCMS	Total
--	-----	-----	------	-------

<i>Arts &amp; Humanities</i>	36	23	12	<b>61</b>
------------------------------	----	----	----	-----------

<i>Science &amp; STEM</i>	25	13	12	<b>50</b>
---------------------------	----	----	----	-----------

<i>Environmental &amp; Adventure Education</i>	20	20	12	<b>52</b>
--	----	----	----	-----------

<i>Language Arts &amp; Writing</i>	35	5	11	<b>51</b>
------------------------------------	----	---	----	-----------





## Prevention and Life Skills

BEACON incorporates prevention strategies and life skills training into our program. Our purpose is to help children gain the tools they need for success that will carry over into all aspects of their lives.

- Developing healthy relationships
- Building positive self-esteem
- Physical exercise and nutrition
- Career exploration and job readiness

# Family Outreach and Events

## BEACON hosted many family and community events in 2016-17:

- Lights On! for Afterschool - attended by over 300 people!
- STEMonstrations at the Moab Festival of Science- hands on science activities for all ages
- Homework Help Workshop - a presentation designed by BEACON's HMK Academic Staff for parents
- Family Art Night - in collaboration with the Moab Arts and Recreation Center
- Family Bowling at Gravel Pit Lanes
- Knights Around the Dinner Table - Family Cooking night with Four Corners Behavioral Health
- Moab Gear Trader Community Dodgeball Tournament - with the support of Moab Gear Trader and Moab City Recreation
- Dad Skills Saturday - a unique skill building event for families
- Annual Family Picnic - Food and fun to celebrate the year



# Thank you for your support!



**Supporting BEACON is an excellent way to make a difference in our community.**

## **COMMUNITY AND BUSINESS SPONSORS**

Archway Inn • Best Western Canyonlands Inn • Emery Telecom • Turner Lumber • Moab Lodging • Jailhouse Café • Canyon Voyages Adventure Company • Moab Gear Trader • Questar Gas • The Synergy Company • Moab Community Dance Band



## **FUNDERS**

21st Century Community Learning Center • Grand County School District • Utah State University Grand County Special Service Recreation District • Moab Arts Council • Moab Music Festival • My Good Fund • Department of Workforce Services-Office of Child Care • Rocky Mountain Power Utah State Board of Education • WabiSabi • Moab Half Marathon • Rally on the Rocks

## **DONORS**

Alison Ling and Chi Mellor • Aracely Najera Chavez • Ashley Sevenoff • Barry Ellison • Ben and Melissa Byrd • Chene Major • Christina Sloan • Dan Norris • David Bierschied • Dick Toll • Edith Sage • Ester Channel • Ginna Wardle • Hazel Dalton • Jamey Edwards • Jen Sadoff • Jenna Woodbury • Jeremy Spaulding • Jim and Vicki Webster • John Aldridge • John and Alisa Knight • Kaitlin Thomas • Kokeshi P Matsumura • Laura Lee Kruta • Maria Lemus • Maria Alegera Lewis • Maria Gianino • Marva Lewis • Mike McCurdy • Minerva Santana • Moab Community Dance Band • NaaNue Gowan • Rachel Moody • Rachel Stenta • Rhiana Medina • Ryan and Melodie McCandless • Sharon Levitt • Steve Kennedy • Sue Allemand • Valarie Valenzuela



# Community Partners

BEACON worked with 55 Community Partners to deliver services to youth, enhance our programs, and provide family events. Without your support, this program would not be what it is today!

Best Western Plus Canyonlands Inn • Blu Pig • Canyon Country Discovery Center • Canyonlands Field Institute • Community Rebuilds • CrossFit Moab • Desert Highlights • Eddie McStiffs • Eddyline Welding • Eklecticafe • Escape Adventures (Moab Cyclery) • Gear Heads • Grand County Bee Inspector • Grand County Public Library • Grand Rental Center • Gravel Pit Lanes • Grand County High School Auto Shop • La Sal Mountain Outfitters • Magpie Cycling • Miguel's Baja Grill • Milt's Stop & Eat • Moab Animal Shelter • Moab City Recreation • Moab Cliffs & Canyons • Moab Desert Adventures • Moab Made • Moab Mountain Bike Instruction • Moab Regional Hospital • Moab Tool Shed • Moab Tourism Center • Moonflower Community Cooperative • Moab Recreation and Aquatic Center • Museum of Moab • Moab Valley Multicultural Center • National Park Service • Pasta Jays • Pizza Hut • Redtail Aviation • Rim Cyclery • Rim Tours • Riverside Plumbing • Sheri Griffith River Expeditions • Sweet Cravings • Times Independent • USU 4H • USU Eastern • USU Engineering • Utah Natural History Museum • WabiSabi • Walker Drug • Western Spirit Cycling • Windgate Adventures • Ye Ol Geezer Meat Shop • Youth Garden Project • Zax Restaurant



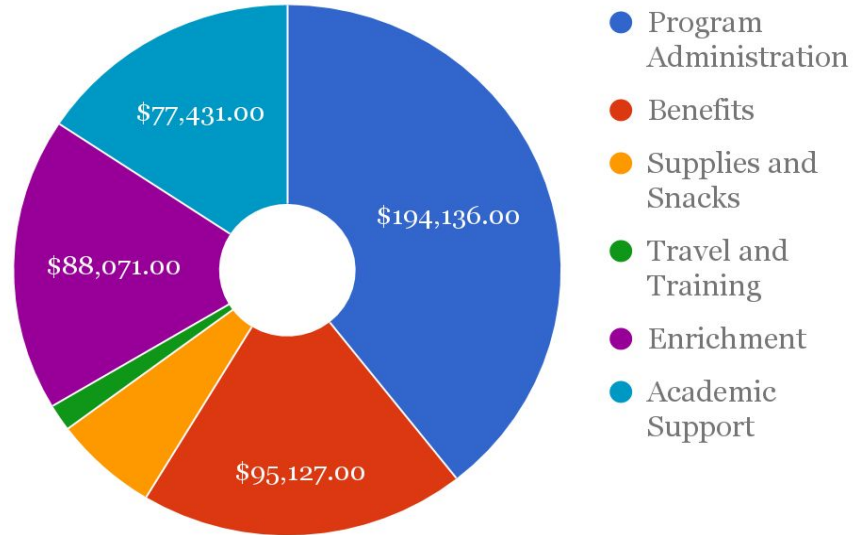
*BEACON students have countless opportunities to ride mountain bikes with generous outfitters, such as Magpie Cycling Adventures.*



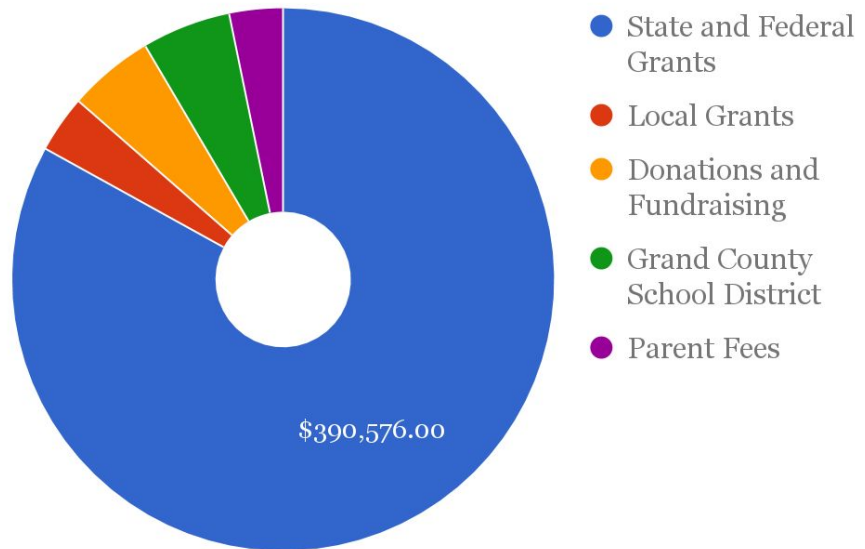
## Financial Information

Did you know?  
 79% of BEACON's revenue go towards direct services to local youth.  
 By making a donation, you can help our students grow!

## 2016-17 Expenses



## 2016-17 Revenues





## Professional Development

Our staff are well-trained in providing quality programming for school-age children. All BEACON staff who work 10 hours per week or more complete 20 hours of professional training each year.

- BEACON Orientation
- DWS Trauma Awareness Training
- Through the Trauma Lens (w/ Kelly Vagts)
- Canyon Country Outdoor Education- Working with Youth Training
- Integrating Core Curriculum into Lesson Planning
- Cultural Awareness & Spanish Basics Training
- Child Care Licensing Pre-Service Training
- Working with Special Education Students
- Utah Afterschool Network State Conferences: Jumpstart, Northern Recharge, and Southern Recharge
- Utah Afterschool Network Trainings: eLearning Institute online subscription and STEMSaturday Training
- CPR & First Aid Certifications
- Mental Health First Aid Certification
- Utah Food Handlers Permit
- Why Try - Evidence-based curriculum training





*“They infuse the children of Moab with joy and experiences they'd not get otherwise; making them feel worth the time and cherished. Good work, all.”*

*- BEACON Parent*

## 2016-2017 Staff Members

Aimee Lorenzen • Arlajean Paskett • Barry Ellison  
Becky Peterson • Ben Oberhand • Brad Hanson, Brooklyn Kay  
Carolyn Stiles • Charlotte Quigley • Cheree Geiser • Corinne Choag  
Debra Holland • Edith Sage • Ilona Carlson • Jeremy Spaulding  
John Aldridge • Jorge Hernandez • Kaitlin Thomas • Kari Barnard  
Kari Han • Karisa Larsen • Katie Struth • Kristine Martin  
Lauren Delaunay • Lilly Hacker • Linda Grawet • Lindsey Clements  
Megan Macomber • Melanie Dolphin • Mike McCue  
Melissa McKimmey • Michele Onderko • Monica Sierra  
Nanci Flesher • Nancy (Monk) Allemand • Nara Bopp  
Quincy Masur • Rita Maldonado • Rob Magleby • Sandy White •  
Saundra Parry • Silas Rappe • Tamara Freda • Tom Edwards  
Tony Barrett • Xandra Odland

